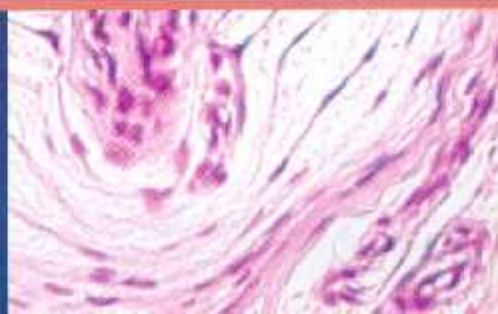


SEVENTH EDITION

Color Atlas and Text of
HISTOLOGY

LESLIE P. GARTNER

 Wolters Kluwer



Reviewers vi

Preface vii

Acknowledgments viii

CHAPTER 1

THE CELL 1

GRAPHIC

- 1-1 The Cell 12
- 1-2 The Organelles 13
- 1-3 Membranes and Membrane Trafficking 14
- 1-4 Protein Synthesis and Exocytosis 15

PLATE

- 1-1 Typical Cell 16
- 1-2 Cell Organelles and Inclusions 18
- 1-3 Cell Surface Modifications 20
- 1-4 Mitosis, Light and Electron Microscopy 22
- 1-5 Typical Cell, Electron Microscopy 24
- 1-6 Nucleus and Cytoplasm, Electron Microscopy 26
- 1-7 Nucleus and Cytoplasm, Electron Microscopy 28
- 1-8 Golgi Apparatus, Electron Microscopy 30
- 1-9 Mitochondria, Electron Microscopy 32

CHAPTER 2

EPITHELIUM AND GLANDS 34

GRAPHIC

- 2-1 Junctional Complex 42
- 2-2 Salivary Gland 43

PLATE

- 2-1 Simple Epithelia and Pseudostratified Epithelium 44
- 2-2 Stratified Epithelia and Transitional Epithelium 46
- 2-3 Pseudostratified Ciliated Columnar Epithelium, Electron Microscopy 48
- 2-4 Epithelial Junctions, Electron Microscopy 50
- 2-5 Glands 52
- 2-6 Glands 54

REVIEW PLATE 2-1 56

CHAPTER 3

CONNECTIVE TISSUE 60

GRAPHIC

- 3-1 Collagen 70
- 3-2 Connective Tissue Cells 71

PLATE

- 3-1 Embryonic and Connective Tissue Proper I 72
- 3-2 Connective Tissue Proper II 74
- 3-3 Connective Tissue Proper III 76
- 3-4 Fibroblasts and Collagen, Electron Microscopy 78
- 3-5 Mast Cell, Electron Microscopy 79
- 3-6 Mast Cell Degranulation, Electron Microscopy 80
- 3-7 Developing Fat Cell, Electron Microscopy 81

REVIEW PLATE 3-1 82

REVIEW PLATE 3-2 84

CHAPTER 4

CARTILAGE AND BONE 88

GRAPHIC

- 4-1 Compact Bone 96
- 4-2 Endochondral Bone Formation 97

PLATE

- 4-1 Embryonic and Hyaline Cartilages 98
- 4-2 Elastic and Fibrocartilages 100
- 4-3 Compact Bone 102
- 4-4 Compact Bone and Intramembranous Ossification 104
- 4-5 Endochondral Ossification 106
- 4-6 Endochondral Ossification 108
- 4-7 Hyaline Cartilage, Electron Microscopy 110
- 4-8 Osteoblasts, Electron Microscopy 111
- 4-9 Osteoclast, Electron Microscopy 112

REVIEW PLATE 4-1 114

REVIEW PLATE 4-2 116

CHAPTER 5

BLOOD AND HEMOPOIESIS 120

PLATE

- 5-1 Circulating Blood 128
- 5-2 Circulating Blood (Drawing) 130
- 5-3 Blood and Hemopoiesis 131
- 5-4 Bone Marrow and Circulating Blood 132
- 5-5 Erythropoiesis 134
- 5-6 Granulocytopoiesis 135

REVIEW PLATE 5-1 136

REVIEW PLATE 5-2 138

CHAPTER 6 MUSCLE 142

GRAPHIC

- 6-1** Molecular Structure of Skeletal Muscle 150
6-2 Types of Muscle 151

PLATE

- 6-1** Skeletal Muscle 152
6-2 Skeletal Muscle, Electron Microscopy 154
6-3 Myoneural Junction, Light and Electron Microscopy 156
6-4 Myoneural Junction, Scanning Electron Microscopy 158
6-5 Muscle Spindle, Light and Electron Microscopy 159
6-6 Smooth Muscle 160
6-7 Smooth Muscle, Electron Microscopy 162
6-8 Cardiac Muscle 164
6-9 Cardiac Muscle, Electron Microscopy 166

REVIEW PLATE 6-1 168

REVIEW PLATE 6-2 170

REVIEW PLATE 6-3 172

CHAPTER 7 NERVOUS TISSUE 175

GRAPHIC

- 7-1** Spinal Nerve Morphology 182
7-2 Neurons and Myoneural Junctions 183

PLATE

- 7-1** Spinal Cord 184
7-2 Cerebellum, Synapse, Electron Microscopy 186
7-3 Cerebrum, Neuroglial Cells 188
7-4 Sympathetic Ganglia, Sensory Ganglia 190
7-5 Peripheral Nerve, Choroid Plexus 192
7-6 Peripheral Nerve, Electron Microscopy 194
7-7 Neuron Cell Body, Electron Microscopy 196

REVIEW PLATE 7-1 198

REVIEW PLATE 7-2 200

CHAPTER 8 CIRCULATORY SYSTEM 204

GRAPHIC

- 8-1** Artery and Vein 212
8-2 Capillary Types 213

PLATE

- 8-1** Elastic Artery 214
8-2 Muscular Artery, Vein 216
8-3 Arterioles, Venules, Capillaries, Lymph Vessels 218
8-4 Heart 220
8-5 Capillary, Electron Microscopy 222
8-6 Freeze Etch, Fenestrated Capillary, Electron Microscopy 224

REVIEW PLATE 8-1 226

REVIEW PLATE 8-2 228

CHAPTER 9 LYMPHOID TISSUE 232

GRAPHIC

- 9-1** Lymphoid Tissue 243
9-2 Lymph Node, Thymus, and Spleen 244
9-3 B Memory and Plasma Cell Formation 245
9-4 Cytotoxic T-Cell Activation and Killing of Virally Transformed Cells 246
9-5 Macrophage Activation by T_H1 Cells 247

PLATE

- 9-1** Lymphatic Infiltration, Lymphatic Nodule 248
9-2 Lymph Node 250
9-3 Lymph Node, Tonsils 252
9-4 Lymph Node, Electron Microscopy (EM) 254
9-5 Thymus 256
9-6 Spleen 258

REVIEW PLATE 9-1 260

REVIEW PLATE 9-2 262

CHAPTER 10 ENDOCRINE SYSTEM 266

GRAPHIC

- 10-1** Pituitary Gland and Its Hormones 275
10-2 Endocrine Glands 276
10-3 Sympathetic Innervation of the Viscera and the Medulla of the Suprarenal Gland 277

PLATE

- 10-1** Pituitary Gland 278
10-2 Pituitary Gland 280
10-3 Thyroid Gland, Parathyroid Gland 282
10-4 Suprarenal Gland 284
10-5 Suprarenal Gland, Pineal Body 286
10-6 Pituitary Gland, Electron Microscopy 288
10-7 Pituitary Gland, Electron Microscopy 289

REVIEW PLATE 10-1 290

REVIEW PLATE 10-2 292

CHAPTER 11 INTEGUMENT 296

GRAPHIC

- 11-1** Skin and Its Derivatives 304
11-2 Hair, Sweat Glands, and Sebaceous Glands 305

PLATE

- 11-1** Thick Skin 306
11-2 Thin Skin 308
11-3 Hair Follicles and Associated Structures, Sweat Glands 310

11-4 Nail, Pacinian and Meissner's Corpuscles 312

11-5 Sweat Gland, Electron Microscopy 314

REVIEW PLATE 11-1 316

REVIEW PLATE 11-2 318

CHAPTER 12

RESPIRATORY SYSTEM 322

GRAPHIC

12-1 Conducting Portion of Respiratory System 330

12-2 Respiratory Portion of Respiratory System 331

PLATE

12-1 Olfactory Mucosa, Larynx 332

12-2 Trachea 334

12-3 Respiratory Epithelium and Cilia, Electron Microscopy 336

12-4 Bronchi, Bronchioles 338

12-5 Lung Tissue 340

12-6 Blood-Air Barrier, Electron Microscopy 342

REVIEW PLATE 12-1 344

REVIEW PLATE 12-2 346

CHAPTER 13

DIGESTIVE SYSTEM I 350

GRAPHIC

13-1 Tooth and Tooth Development 360

13-2 Tongue and Taste Bud 361

PLATE

13-1 Lip 362

13-2 Tooth and Pulp 364

13-3 Periodontal Ligament and Gingiva 366

13-4 Tooth Development 368

13-5 Tongue 370

13-6 Tongue and Palate 372

13-7 Teeth and Nasal Aspect of the Hard Palate 374

13-8 Teeth Scanning Electron Micrograph of Enamel 376

13-9 Teeth Scanning Electron Micrograph of Dentin 377

REVIEW PLATE 13-1 378

REVIEW PLATE 13-2 380

CHAPTER 14

DIGESTIVE SYSTEM II 384

GRAPHIC

14-1 Stomach and Small Intestine 394

14-2 Large Intestine 395

PLATE

14-1 Esophagus 396

14-2 Stomach 398

14-3 Stomach 400

14-4 Duodenum 402

14-5 Jejunum, Ileum 404

14-6 Colon, Appendix 406

14-7 Colon, Electron Microscopy 408

14-8 Colon, Scanning Electron Microscopy 409

REVIEW PLATE 14-1 410

REVIEW PLATE 14-2 412

CHAPTER 15

DIGESTIVE SYSTEM III 416

GRAPHIC

15-1 Pancreas 424

15-2 Liver 425

PLATE

15-1 Salivary Glands 426

15-2 Pancreas 428

15-3 Liver 430

15-4 Liver, Gallbladder 432

15-5 Salivary Gland, Electron Microscopy 434

15-6 Liver, Electron Microscopy 436

15-7 Islet of Langerhans, Electron Microscopy 437

REVIEW PLATE 15-1 438

REVIEW PLATE 15-2 440

CHAPTER 16

URINARY SYSTEM 444

GRAPHIC

16-1 Uriniferous Tubules 454

16-2 Renal Corpuscle 455

PLATE

16-1 Kidney, Survey and General Morphology 456

16-2 Renal Cortex 458

16-3 Glomerulus, Scanning Electron Microscopy 460

16-4 Renal Corpuscle, Electron Microscopy 461

16-5 Renal Medulla 462

16-6 Ureter and Urinary Bladder 464

REVIEW PLATE 16-1 466

REVIEW PLATE 16-2 468

CHAPTER 17

FEMALE REPRODUCTIVE SYSTEM 472

GRAPHIC

17-1 Female Reproductive System 482

17-2 Placenta and Hormonal Cycle 483

PLATE

17-1 Ovary 484

17-2 Ovary and Corpus Luteum 486

17-3 Ovary and Oviduct 488

17-4 Oviduct, Light and Electron Microscopy 490

17-5 Uterus 492

17-6 Uterus 494

17-7 Placenta and Vagina 496

17-8 Mammary Gland 498

REVIEW PLATE 17-1 500

REVIEW PLATE 17-2 502

CHAPTER 18

MALE REPRODUCTIVE SYSTEM 506

GRAPHIC

18-1 Male Reproductive System 514

18-2 Spermiogenesis 515

PLATE

18-1 Testis 516

18-2 Testis and Epididymis 518

18-3 Epididymis, Ductus Deferens, and Seminal Vesicle 520

18-4 Prostate, Penis, and Urethra 522

18-5 Epididymis, Electron Microscopy 524

REVIEW PLATE 18-1 526

REVIEW PLATE 18-2 528

CHAPTER 19

SPECIAL SENSES 532

GRAPHIC

19-1 Eye 540

19-2 Ear 541

PLATE

19-1 Eye, Cornea, Sclera, Iris, and Ciliary Body 542

19-2 Retina, Light, and Scanning Electron Microscopy 544

19-3 Fovea, Lens, Eyelid, and Lacrimal Glands 546

19-4 Inner Ear 548

19-5 Cochlea 550

19-6 Spiral Organ of Corti 552

REVIEW PLATE 19-1 554

CHAPTER 20

HISTOLOGICAL TECHNIQUES 559

Appendix

TISSUES THAT RESEMBLE EACH OTHER 565

Index 577